

# MOBILE BARRIERS MBT-1

---

INCREASING SAFETY AND EFFICIENCY

# WORK ZONE INCIDENTS



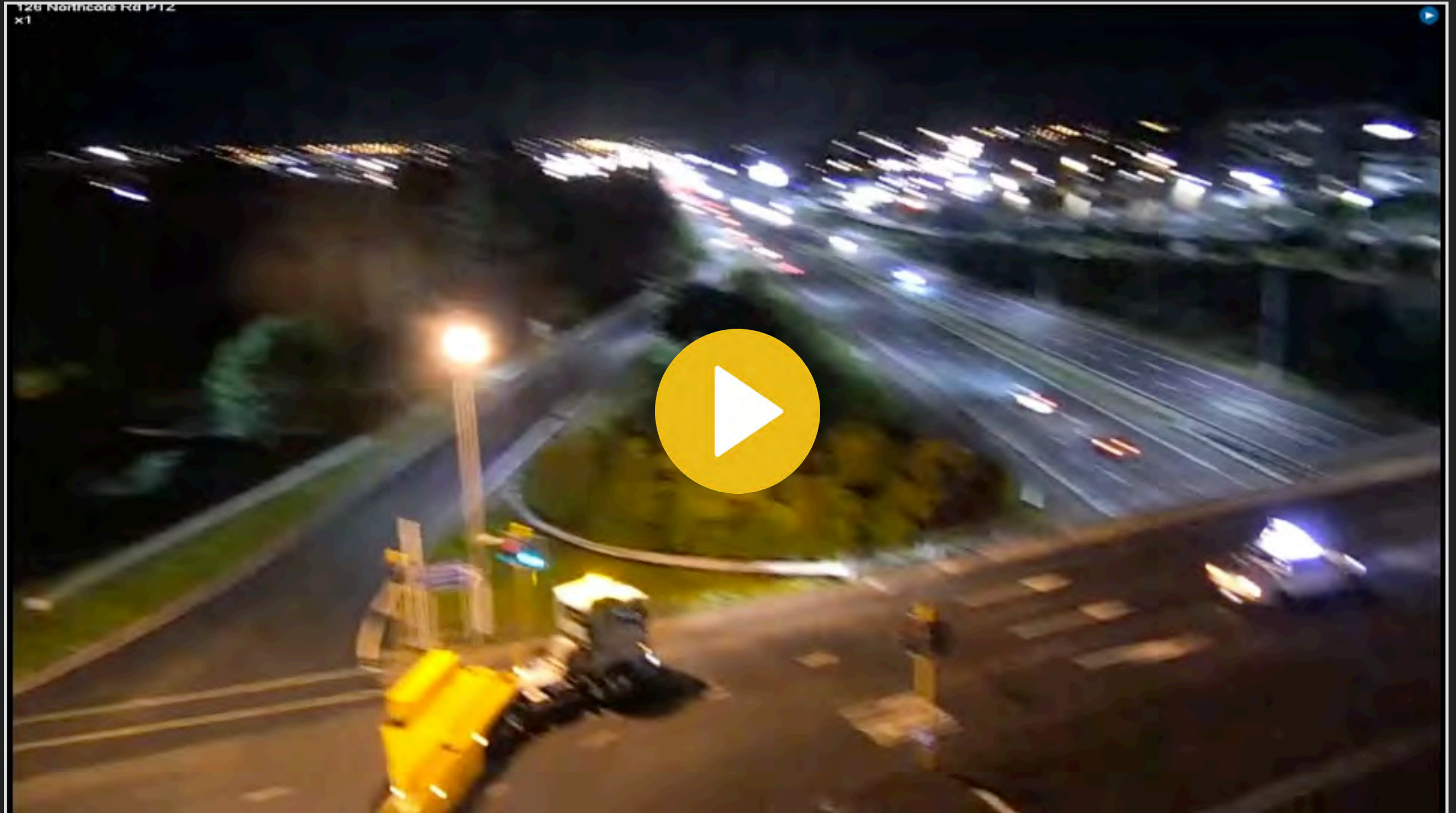
**68% OF HIGHWAY CONTRACTORS REPORTED MOTOR VEHICLE INCURSIONS IN THEIR WORK SITES CAUSING:**

- ▶ **PASSENGER INJURIES (44%) AND FATALITIES (16%)**
- ▶ **WORKER INJURIES (17%) AND FATALITIES (5%)**
- ▶ **PROJECT DELAYS (36%)**



# SOLUTION: MOBILE BARRIERS MBT-1

Solid Protection from Work Zone Intrusions



Video Link: <https://www.mobilebarriers.com/media/video/NZ%20MB%20IN%20USE%20Video.mp4>



# MOBILE BARRIERS MBT-1

SELF CONTAINED MOBILE BARRIER FOR SHORT TERM WORK ZONES WITH ON-BOARD POWER AND STORAGE, LIGHTS, SIGNAGE AND TMA. RECONFIGURABLE LEFT TO RIGHT. MODULAR UP TO 102'.





# FEATURES

Power



Lights



Storage





# FEATURES

Signage



TMA



Rear Steer





# BENEFITS OF MOBILE BARRIERS MBT-1

- ▶ Safeguard Workers Against Intrusions
- ▶ Increased Focus on Task
- ▶ Reduce Set-Up
- ▶ Increase Productivity with On-Board Tools and Supplies
- ▶ Employee Retention
- ▶ Decreased Liability and Damages
- ▶ Reduce Risk and Exposure to Dangers of Live Work Zone
- ▶ More Efficient/Saves Time





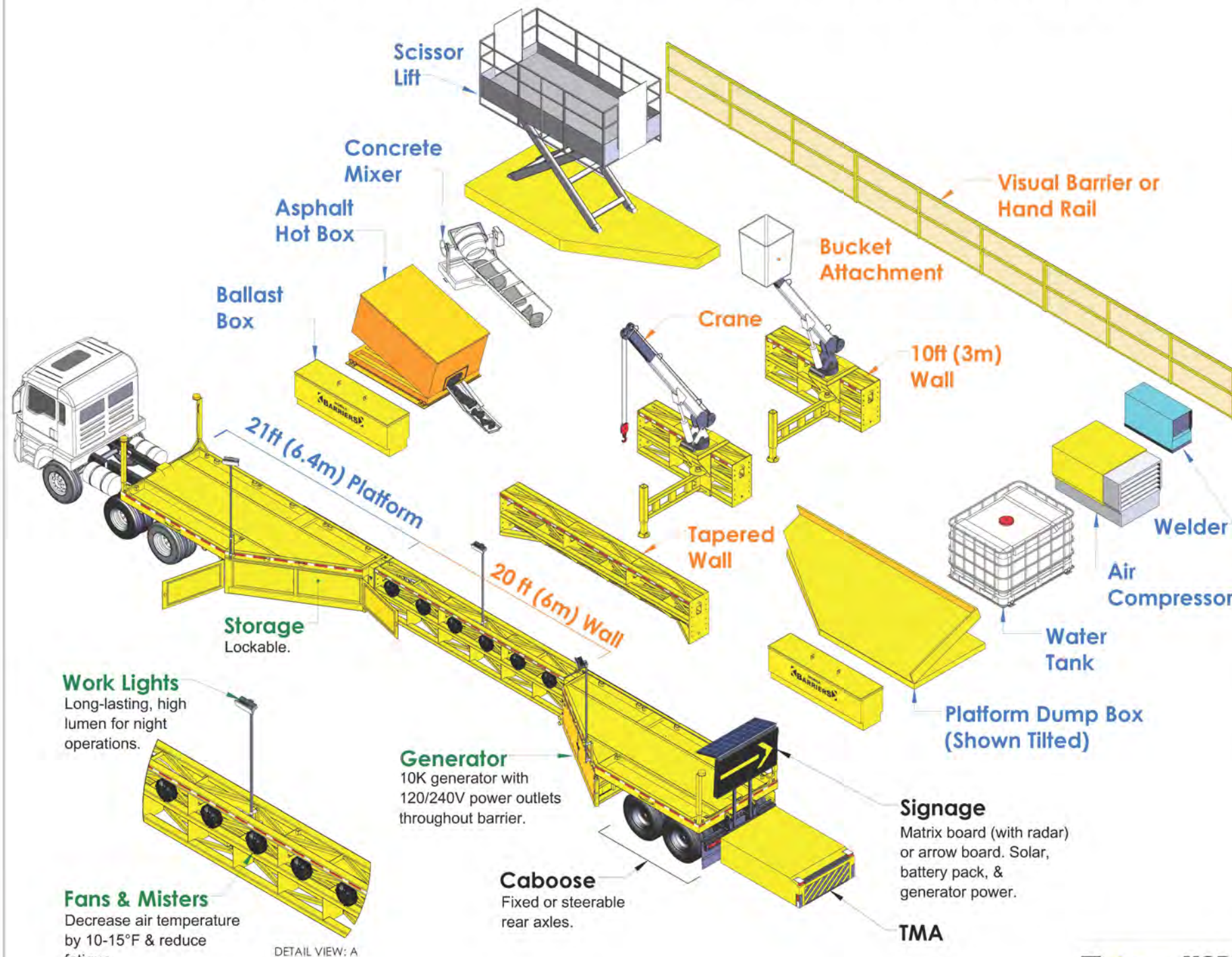
# APPLICATIONS OF MOBILE BARRIERS MBT-1

- ▶ Bridge Deck and Joint Repairs
- ▶ Tunnel Work
- ▶ Pothole and Slab Replacements
- ▶ Guard Rail and Median Repair
- ▶ Re-lamping
- ▶ ITS Installation and Maintenance
- ▶ Debris Pick Up
- ▶ Inspections
- ▶ Signage Maintenance
- ▶ Crane and Bucket Option
- ▶ Incident Response
- ▶ Full Ramp Closures





## Customize to your Work Site Needs



### Mount Equipment on Platforms

#### Hot Box, Water Tank, & Concrete Mixer

Sub-frames bolt/unbolt from platforms to change options (i.e. water tanks, asphalt hot boxes, dump box, concrete mixer, etc).

#### Platform Dump Box

Box tilts to dump contents. Tie-downs secure bulky items. Quickly transport & unload

- Hurricane debris
- Rubble & rockfall
- Guardrail & gore points
- Beams, piping, poles, & culverts

### Full Lane Access & Heavy Lifting

#### Crane

Operates inside one road lane. Single outrigger folds against wall when not in use. Enables heavy lifting on/off either platform. Optional bucket.

#### Tapered Wall

Cross-section tapers allowing full lane access with only 6 in (15 cm) incursion in adjacent lane.



### Improved Ambient Conditions

Improved ambient conditions & work crew productivity with onboard power, work lighting, and fans/misters.

	MBT-1
MBT-1 WEIGHT	30,000lb [13,600 kg] <i>with one 20ft [6.1m] wall section</i>
AXLES	2
MAXIMUM WALL SECTIONS*	3
MAXIMUM WEIGHT (GVWR)	85,000lb [38,500 kg]

\* Typical number of wall sections = 1 or 2  
Weight of extra wall section = 5,000lb [2,270 kg]



Mobile Barriers LLC | Denver Offices: 24918 Genesee Trail Road | Golden, Colorado 80401  
| Phone 303-526-5995 | Fax 303-526-9959 | info@mobilebarriers.com | CAGE Code: 70N96

www.mobilebarriers.com

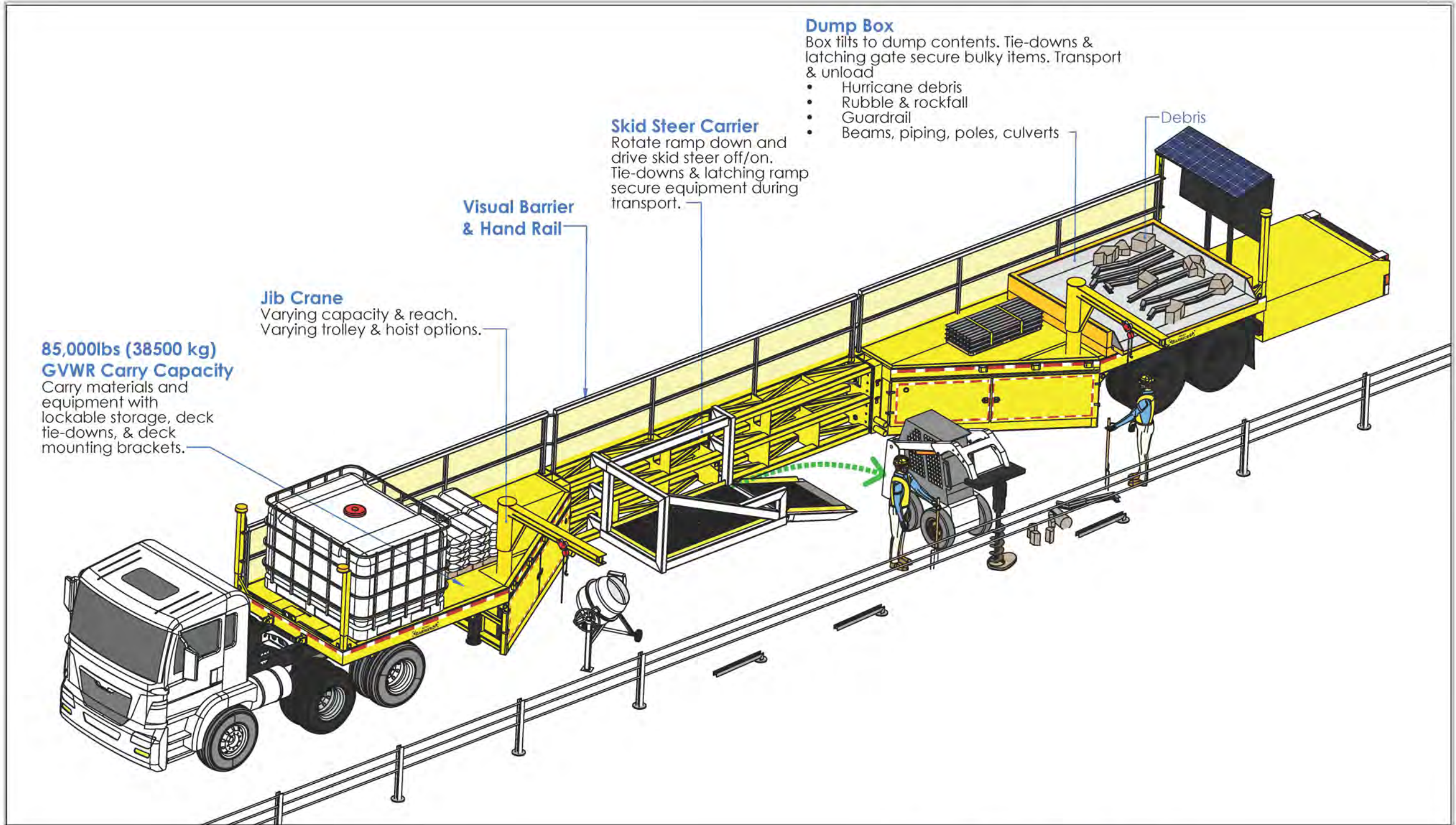
MOBILE BARRIERS & Design, Lines and MBT-1 are Registered Trademarks. © 2007-2019  
Mobile Barriers LLC. All rights reserved. Subject to various patents & patents pending.

TITLE:  
Mobile Barriers MBT-1  
Configuration Options

DWG NO.:  
DW-OPT

SCALE: 1:100 DO NOT SCALE DRAWING.





**85,000lbs (38500 kg)  
GVWR Carry Capacity**  
Carry materials and equipment with lockable storage, deck tie-downs, & deck mounting brackets.

**Jib Crane**  
Varying capacity & reach.  
Varying trolley & hoist options.

**Visual Barrier & Hand Rail**

**Skid Steer Carrier**  
Rotate ramp down and drive skid steer off/on. Tie-downs & latching ramp secure equipment during transport.

**Dump Box**  
Box tilts to dump contents. Tie-downs & latching gate secure bulky items. Transport & unload

- Hurricane debris
- Rubble & rockfall
- Guardrail
- Beams, piping, poles, culverts

Debris

MBT-1	
MBT-1 WEIGHT	30,000lb [13,600 kg] with one 20ft [6.1m] wall section
AXLES	2
MAXIMUM WALL SECTIONS*	3
MAXIMUM WEIGHT (GVWR)	85,000lb [38,500 kg]

\* Typical number of wall sections = 1 or 2  
Weight of extra wall section = 5,000lb [2,270 kg]



Mobile Barriers LLC | Denver Offices: 24918 Genesee Trail Road | Golden, Colorado 80401  
| Phone 303-526-5995 | Fax 303-526-9959 | info@mobilebarriers.com | CAGE Code: 70N96

www.mobilebarriers.com

MOBILE BARRIERS & Design, Lines and MBT-1 are Registered Trademarks. © 2007-2019  
Mobile Barriers LLC. All rights reserved. Subject to various patents & patents pending.

TITLE:

Mobile Barriers MBT-1  
with Jib Crane, Skid Loader  
Carrier, & Dump Box

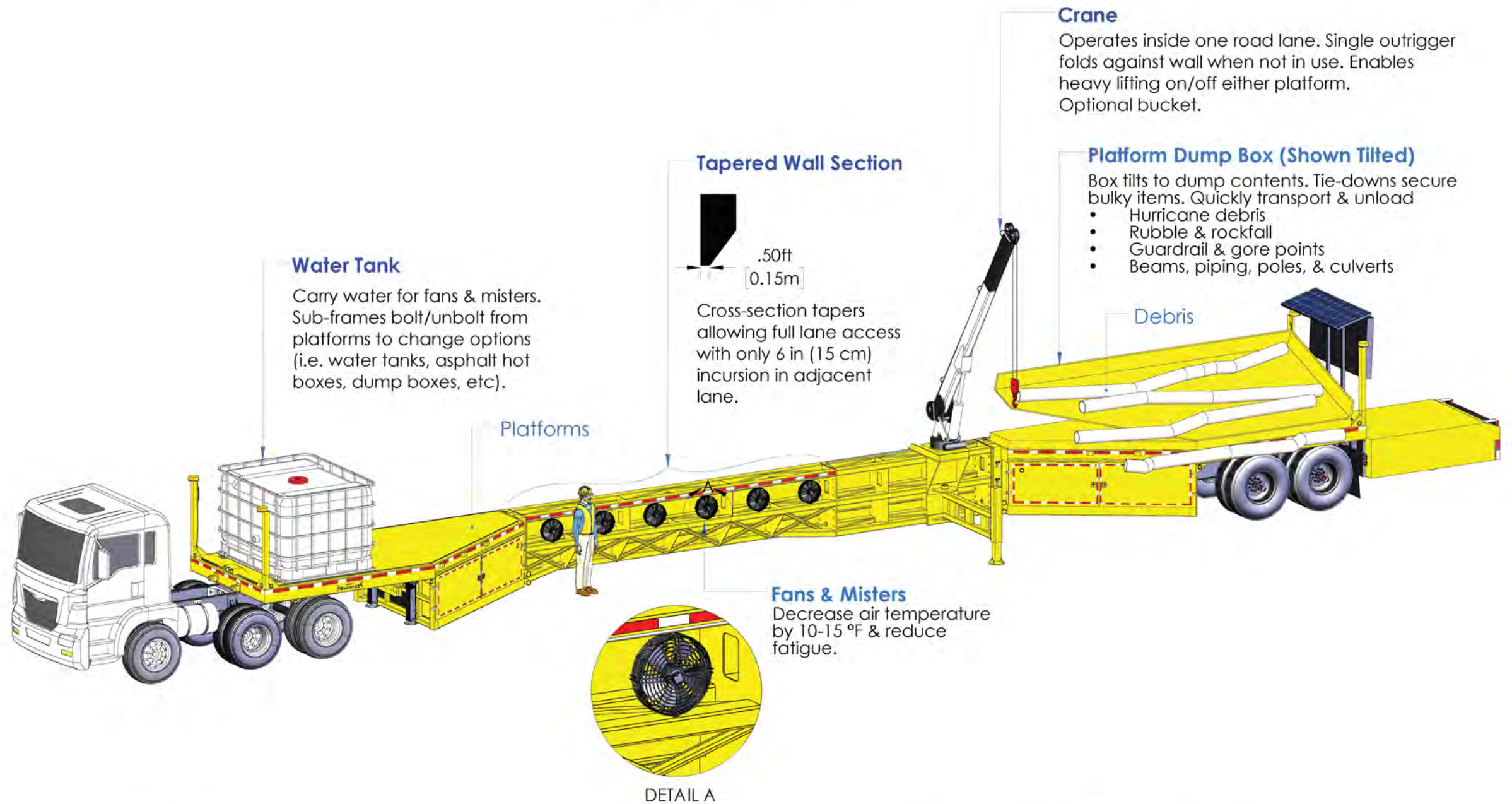
DWG NO.

DW-JC-SKC-DB

SCALE: 1:1024 DO NOT SCALE DRAWING.



# Full Lane Access, Heavy Lifting, & Debris Removal



MBT-1	
MBT-1 WEIGHT	30,000lb [13,600 kg] with one 20ft [6.1m] wall section
AXLES	2
MAXIMUM WALL SECTIONS*	3
MAXIMUM WEIGHT (GVWR)	85,000lb [38,500 kg]

\* Typical number of wall sections = 1 or 2  
Weight of extra wall section = 5,000lb [2,270 kg]



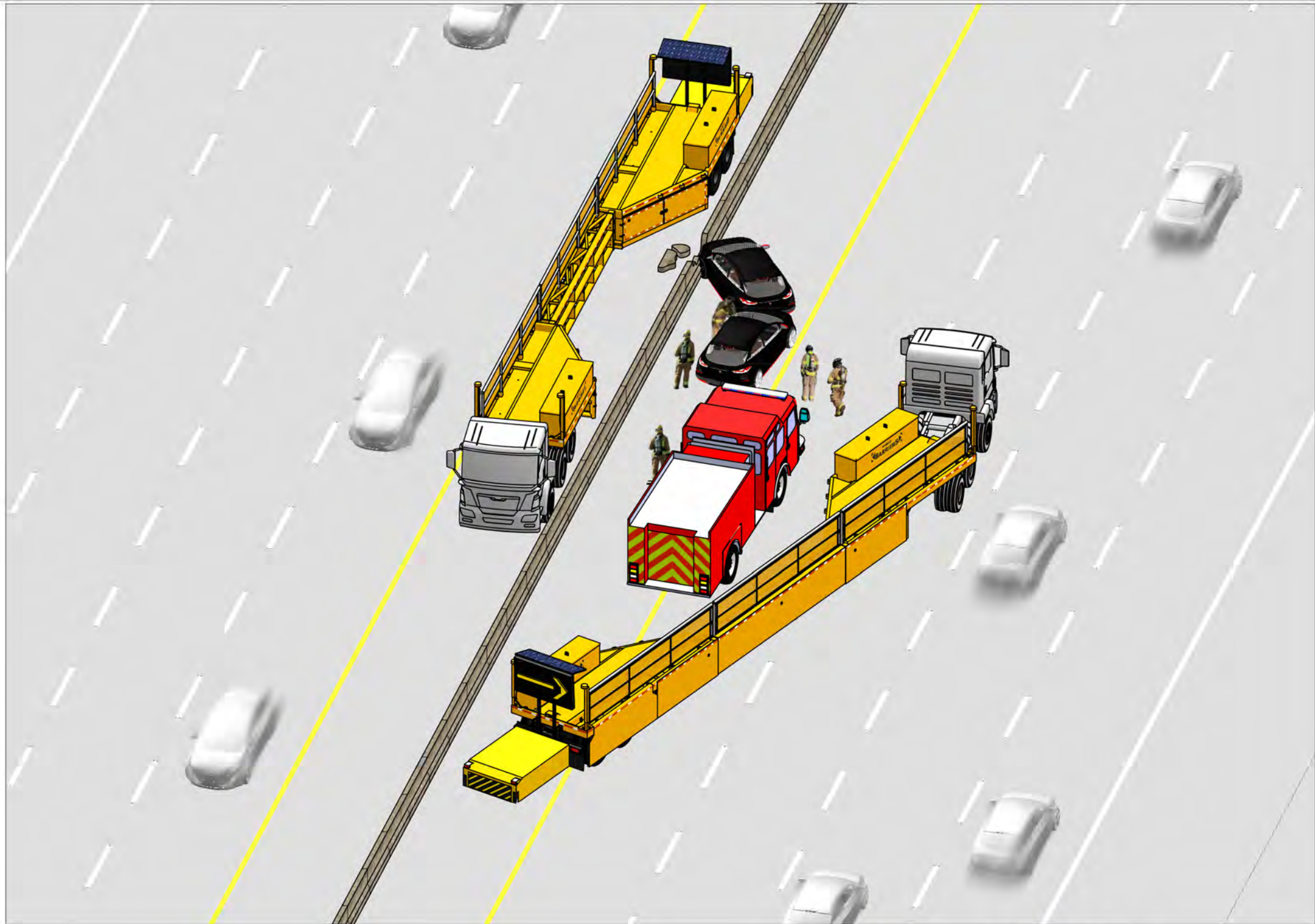
Mobile Barriers LLC | Denver Offices: 24918 Genesee Trail Road | Golden, Colorado 80401  
Phone 303-526-5995 | Fax 303-526-9959 | info@mobilebarriers.com | CAGE Code: 70N96

www.mobilebarriers.com

MOBILE BARRIERS & Design, Lines and MBT-1 are Registered Trademarks. © 2007-2019  
Mobile Barriers LLC. All rights reserved. Subject to various patents & patents pending.

TITLE:	Mobile Barriers MBT-1 with Tapered Wall & Crane
DWG NO.:	DW-HR
SCALE:	1:70 DO NOT SCALE DRAWING.





Mobile Barriers LLC | Denver Offices: 24918 Genesee Trail Road | Golden, Colorado 80401  
| Phone 303-526-5995 | Fax 303-526-9959 | info@mobilebarriers.com | CAGE Code: 70N96  
www.mobilebarriers.com

MOBILE BARRIERS & Design, Lines and MBT-1 are Registered Trademarks. © 2007-2020  
Mobile Barriers LLC. All rights reserved. Subject to various patents & patents pending.

TITLE:

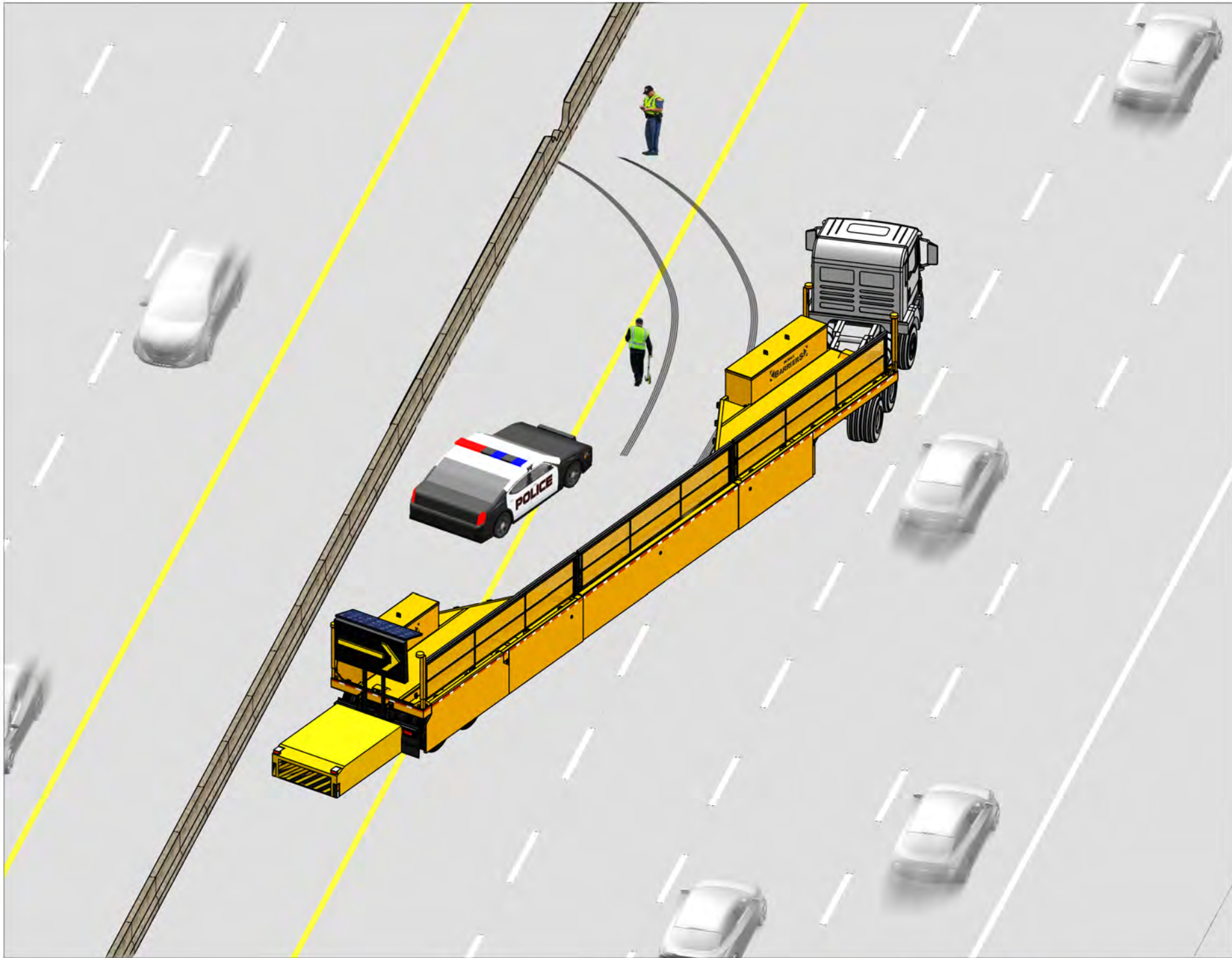
Mobile Barriers MBT-1  
Incident Management

DWG NO.:

DW-INC

SCALE: 1:110 DO NOT SCALE DRAWING





Mobile Barriers LLC | Denver Offices: 24918 Genesee Trail Road | Golden, Colorado 80401  
| Phone 303-526-5995 | Fax 303-526-9959 | info@mobilebarriers.com | CAGE Code: 70N96  
www.mobilebarriers.com

MOBILE BARRIERS & Design, Lines and MBT-1 are Registered Trademarks. © 2007-2020  
Mobile Barriers LLC. All rights reserved. Subject to various patents & patents pending.

TITLE:

Mobile Barriers MBT-1  
Accident Investigation

DWG NO.:

DWACC

SCALE: 1:95 DO NOT SCALE DRAWING





**THERE'S NO BETTER WAY TO REDUCE WORK ZONE ACCIDENTS AND IMPROVE CONDITIONS FOR EVERYONE THAN TO SAFELY COMPLETE THE WORK AS QUICKLY AS POSSIBLE AND REOPEN THE ROADWAY TO NORMAL TRAFFIC FLOW.**

**Former TxDOT Deputy Executive Director**



# WHEN TO USE POSITIVE PROTECTION DEVICES

---

FEDERAL STATUTES & REGULATIONS (23 USC 112(G) & 23 CFR 630.1108)  
ANSI STANDARDS (A10.47)

- ▶ Crews are working in close proximity to high speed traffic
- ▶ There is no good means of escape (e.g. bridges and tunnels)
- ▶ Work zone is particularly hazardous or long in duration





## HOW DOT'S CAN IMPLEMENT POSITIVE PROTECTION

---

- ▶ Spec into existing project or issue change order
  - ▶ Federal Laws 23 USC 112(g) and 23 CFR 630.1108(f)(2) require positive protection to be a separate pay item
    - ▶ Allows contractors to recover applicable costs
- ▶ Purchase Positive Protection with Federal Funds and Allow Contractors to Use





## NEW FEDERAL FUNDING POLICY FOR POSITIVE PROTECTION

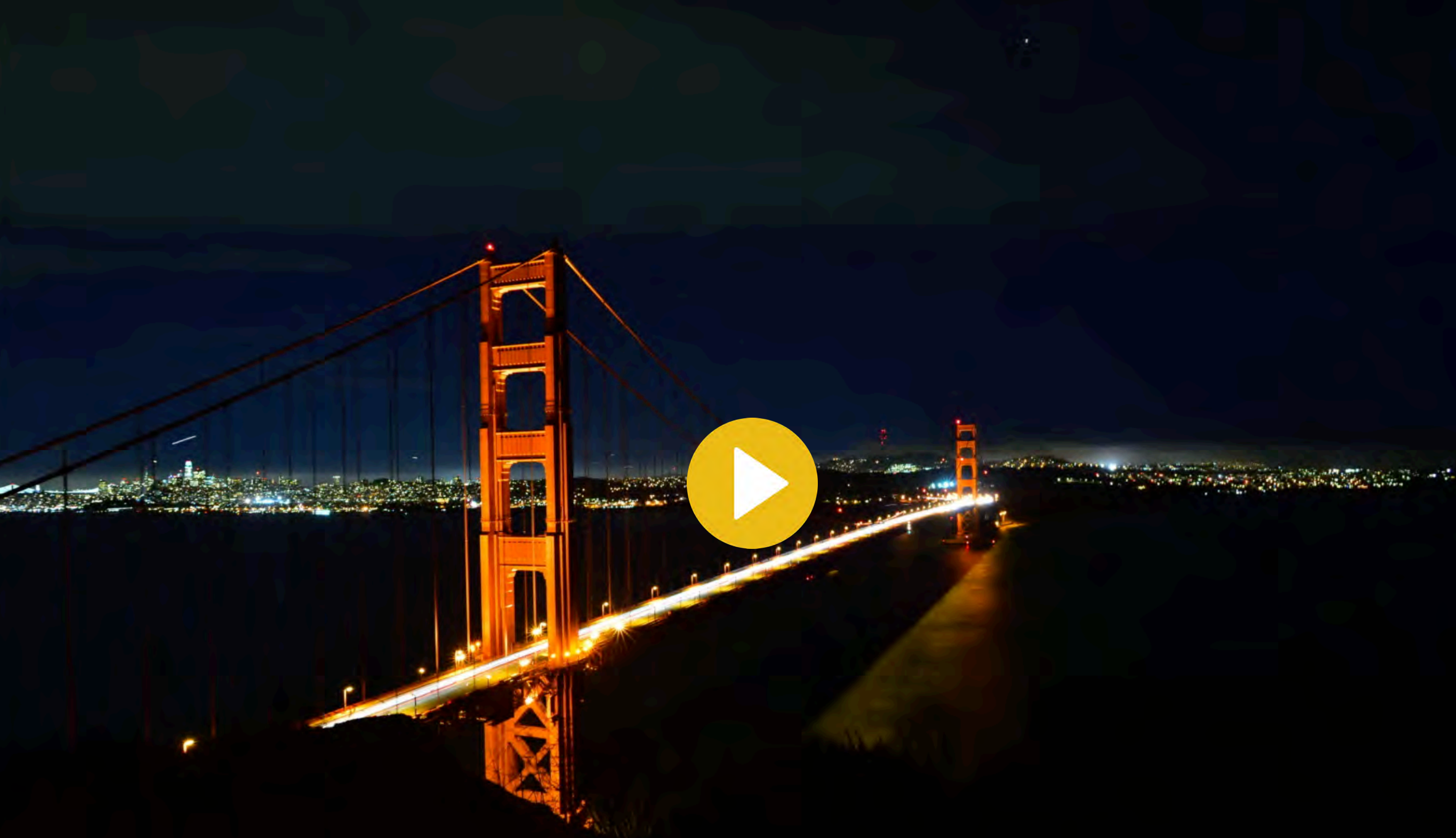
---

- ▶ FHWA has recognized a need for safety equipment for both workers and traveling public
- ▶ Federal Funds (HSIP, STBGP, NHPP) can be used to Purchase Positive Protective Devices:
  - ▶ For Construction and Maintenance
  - ▶ On State and Federal Roads

**FEDERAL FUNDS CAN COVER UP TO 100%  
OF POSITIVE PROTECTION DEVICES**



# Mobile Barrier MBT-1 in Use on Golden Gate Bridge



**SAVING CREWS HOURS EACH SHIFT**





ROAD AHEAD

What grade did your car get?

Is your car's grade?

REAR

55

62A-M72

682473

15



















AUTHORIZED  
VEHICLES  
ONLY











Three workers in high-visibility orange and blue safety gear are positioned on a red scissor lift platform. They are working on the underside of a concrete overpass, which shows signs of repair or damage. The lift is extended upwards, and the workers are secured with safety harnesses.

A blue and white scissor lift truck is positioned on the asphalt road. The lift is extended upwards, supporting the red platform with the workers. The truck has "TK" visible on its side.

A yellow mobile barrier truck is parked on the road. It has a long, low-profile body with a yellow and red striped safety pattern. A generator is connected to the truck via a power cord.

A large yellow mobile barrier truck is parked on the road. It features a tall yellow mast with a flashing amber light at the top. The side of the truck has the text "MOBILE BARRIERS" and "mobilebarriers.com". A warning sign on the side reads "CAUTION X X WIDE TURNS". The truck has large, heavy-duty tires and a silver bumper.

A rectangular signpost is visible on the left side of the road, with a blank sign attached to it.

CAUTION  
X X  
WIDE TURNS

MOBILE  
BARRIERS

mobilebarriers.com

TK

GENERATOR









1850-105  
S&B  
XP-105  
Full-Rand

MOBILE  
BARRIERS  
S&B





MOBILE BARRIERS  
mobilebarriers.com

SKYJACK  
00744  
13 Center Platform

Dingman

TK  
SKYJACK  
www.mcleantaylor.com













# MOBILE BARRIERS MBT-1

---

## SAFETY AND EFFICIENCY

Now Available for Purchase with Federal  
Funding Covering up to 100% of the Cost

[mobilebarriers.com](http://mobilebarriers.com)  
[sales@mobilebarriers.com](mailto:sales@mobilebarriers.com)